

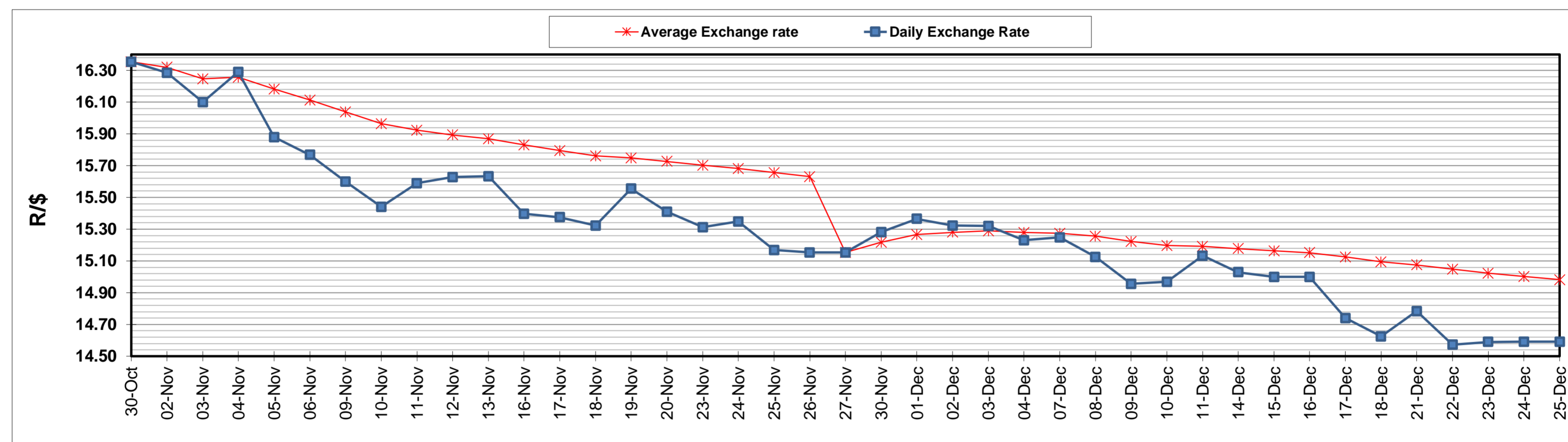
	PETROL 95 ULP	PETROL 93 ULP & LRP	DIESEL 0.05%	DIESEL 0.005%	ILL. PAR.
GAUTENG PUMP PRICE (SA c/l) AS FROM 02/12/2020	1,446.000	1,426.000	-	-	-
WHOLESALE PRICE (SA c/l) AS FROM 02/12/2020	-	-	1,245.420	1,247.820	684.688
SINGLE NATIONAL MAXIMUM RETAIL PRICE	-	-	-	-	856.000
BASIC FUEL PRICE - 25/12/2020 (SA c/l)	532.268	523.487	546.245	549.142	531.401
PRESS RELEASE CONTRIBUTION TO BFP 02/12/2020 - 25/12/2020 (SA c/l)	479.170	469.170	486.630	489.030	472.128
UNIT OVER/(UNDER) RECOVERY - 25/12/2020 (SA c/l)	(53.098)	(54.317)	(59.615)	(60.112)	(59.273)
AVERAGE BASIC FUEL PRICE 27/11/2020 - 25/12/2020	521.142	514.737	539.169	540.729	523.817
AVERAGE UNIT OVER/(UNDER) RECOVERY 27/11/2020 - 25/12/2020	(38.072)	(41.667)	(54.254)	(53.413)	(54.689)

ANALYSIS MOVEMENT OF AVERAGE OVER/(UNDER) RECOVERY

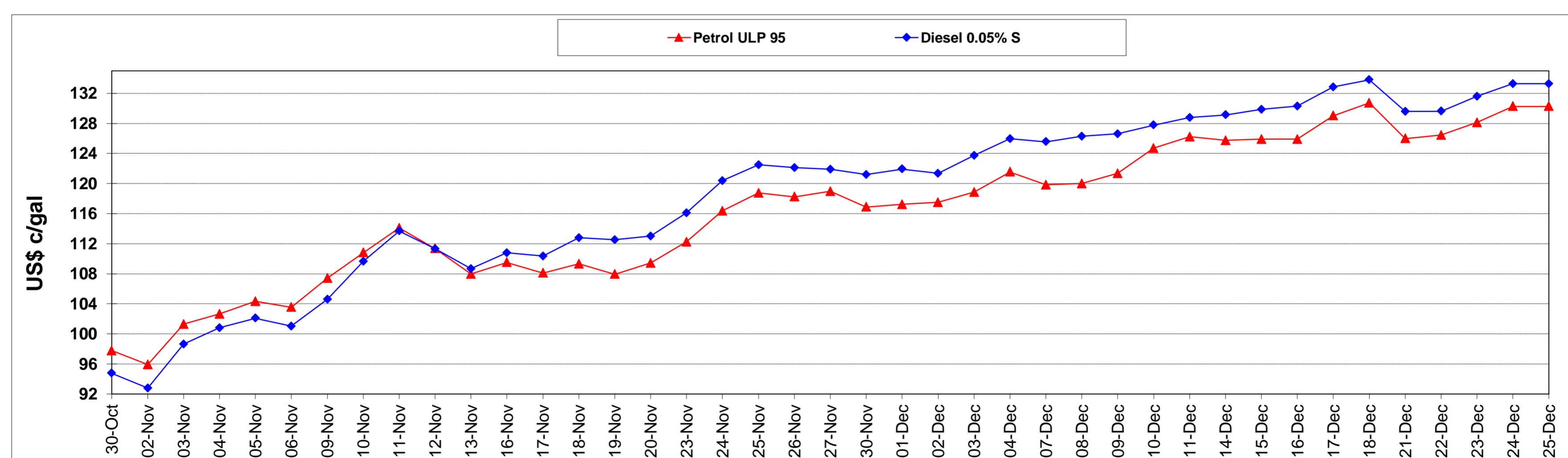
	PETROL 95	PETROL 93	DIESEL 0.05%	DIESEL 0.005%	ILL. PAR.
- MOVEMENT IN INTERNATIONAL PRODUCT PRICES	(60.615)	(63.933)	(77.576)	(76.804)	(77.348)
- MOVEMENT IN EXCHANGE RATE	22.543	22.266	23.323	23.391	22.659
AVERAGE UNIT OVER/(UNDER) RECOVERY 27/11/2020 - 25/12/2020	(38.072)	(41.667)	(54.254)	(53.413)	(54.689)

R/\$ EXCHANGE RATE - (R/\$14.5925 - 25/12/2020)

EXCHANGE RATE USED IN BASIC FUEL PRICE



INTERNATIONAL PRODUCT PRICES OF BASKET USED IN BASIC FUEL PRICE



BASIC FUEL PRICE IN SA CENTS PER LITRE

